

# Practical tools for Creative Climate Action

## Map of Goal & Collaborators

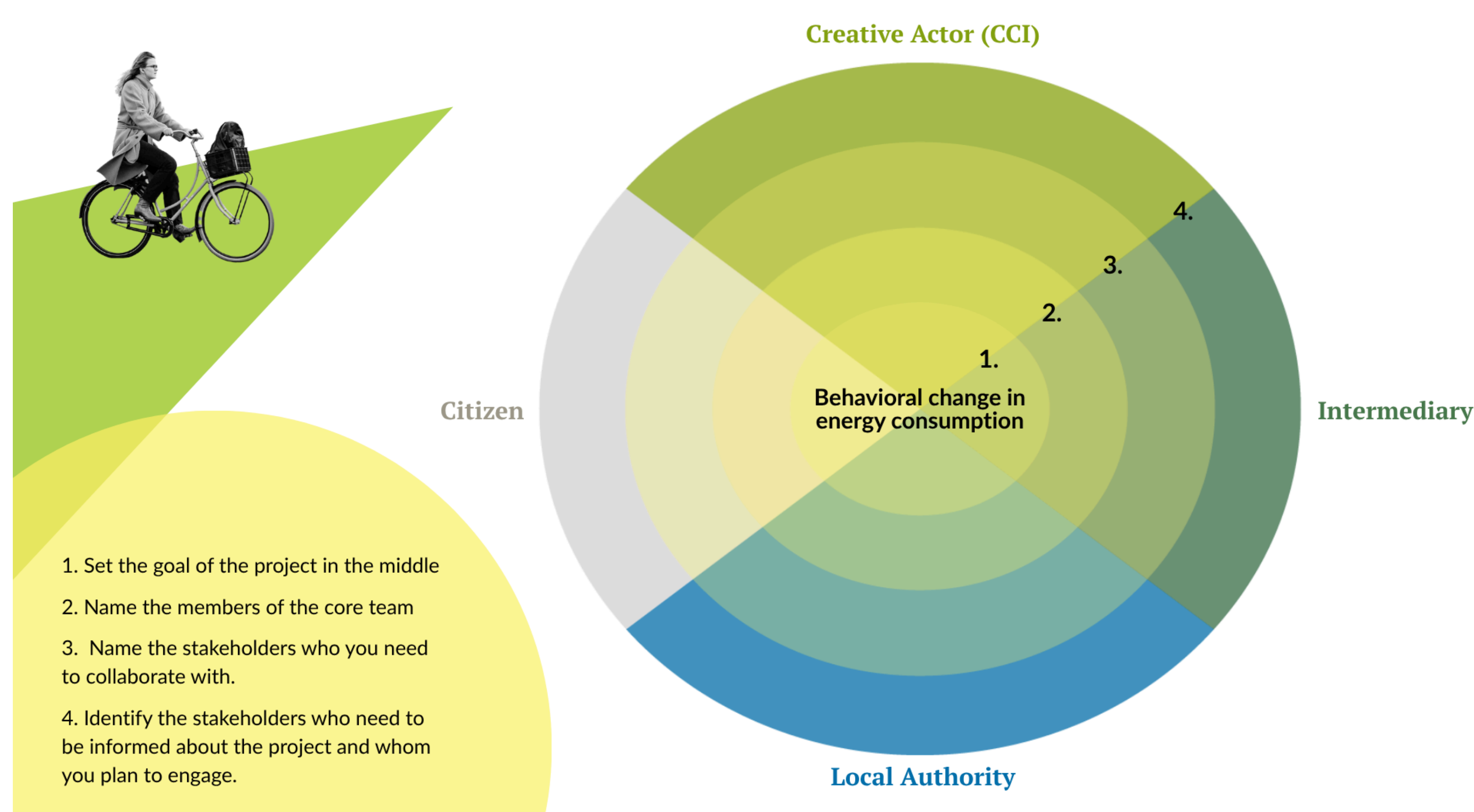
**90-120 min****2-6 participants**

### Tool description and purpose

The purpose of this tool is to foster strong and meaningful collaboration by visualising both the partners and the shared goal within a single image. The Map is an adaptation of the stakeholder mapping tool, commonly used to identify the parties involved in a collaboration. The idea for this new application emerged from the need to reinforce a shared goal and keep it clearly in the minds of all participants. The tool is designed to implement the CCI4Change collaboration model for creative climate action. These key actors in the collaboration are pre-visualised in the image, each playing a vital role in creative climate action.

### When to use?

This tool is designed to be used in the beginning of a collaboration to plan who are the stakeholders of the project, who should be actively involved, and who should simply be kept informed. It's important to map also the internal stakeholders within the organization—for example, the different departments who need to be involved in the collaboration.



### How to use?

It's recommended to schedule a joint workshop with the key players of the collaboration where you collectively map out the actors, their roles in the project, and discuss the division of responsibilities—who is in contact with whom and when. It's also useful to revisit the map as the project progresses to add new partners, acknowledge new potential stakeholders, and reconsider who needs to be kept informed.

### Benefits of using this tool

Mapping the goal & collaborators is a practical tool designed to help local authorities to identify key stakeholders in the creative climate action project.

**Fill in the map on page 2**

### How to use this tool?

1. Set the goal of the project in the middle
2. Name the members of the core team
3. Name the stakeholders who you would like to work with
4. Name the stakeholders who should know about the project and you will inform

